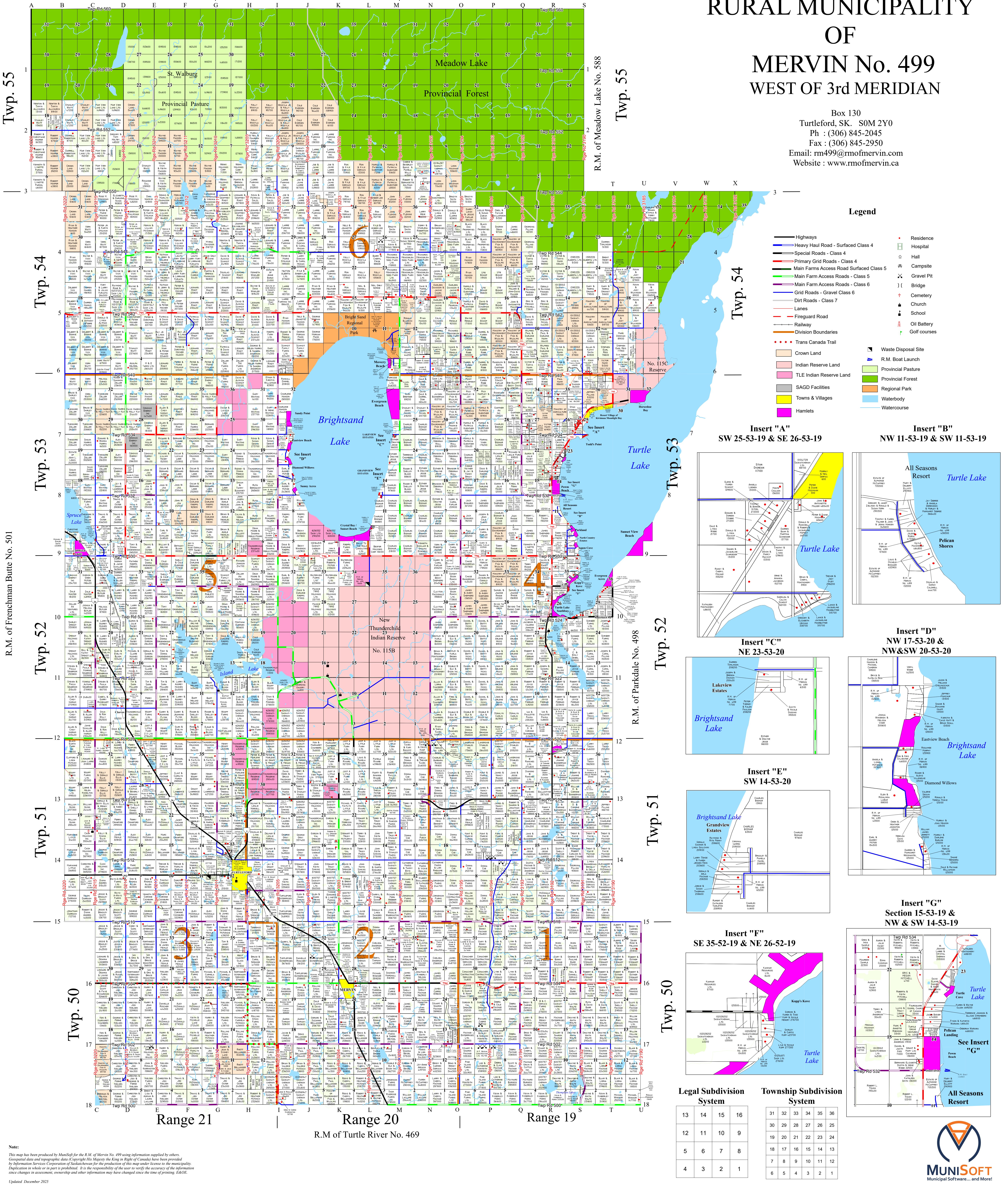


RURAL MUNICIPALITY  
OF  
MERVIN No. 499  
WEST OF 3rd MERIDIAN

Box 130  
Turtleford, SK. S0M 2Y0  
Ph : (306) 845-2045  
Fax : (306) 845-2950  
Email: rm499@rmofmervin.com  
Website : www.rmofmervin.ca

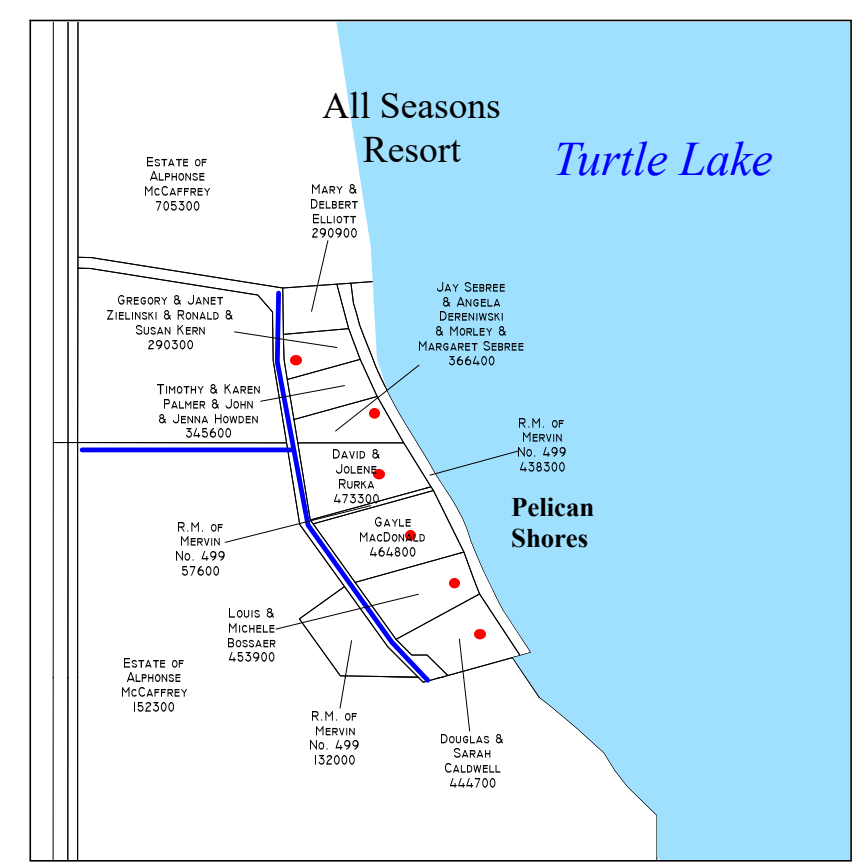
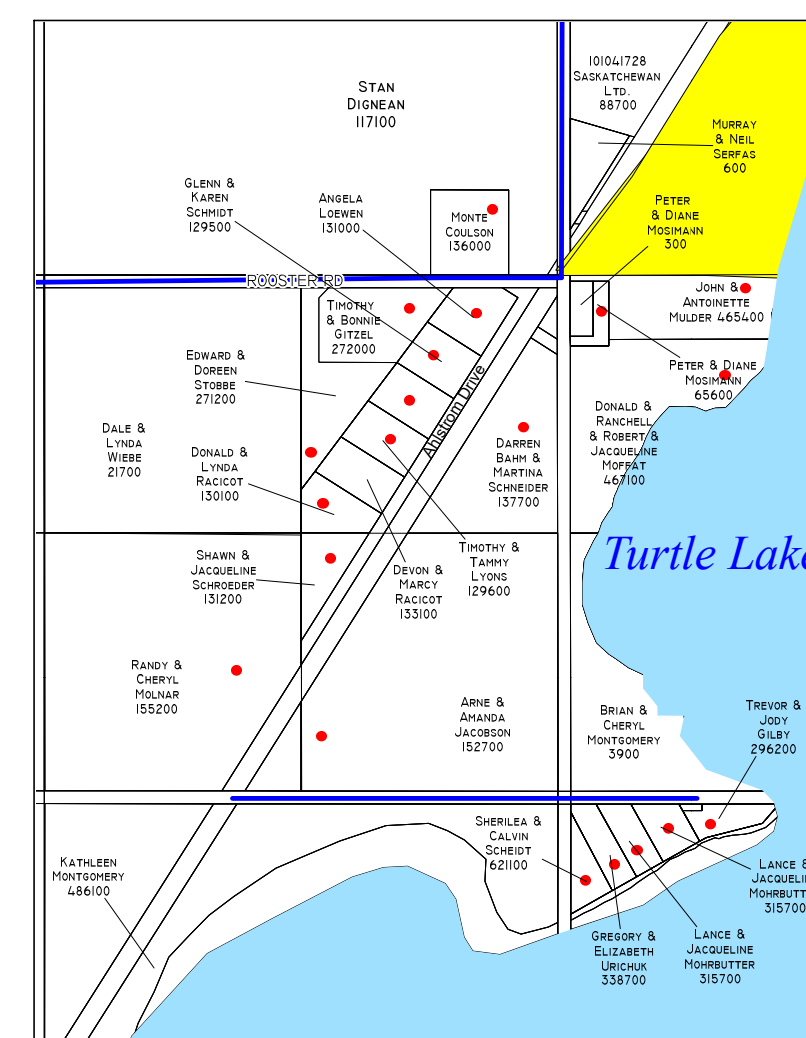


Legend

- Highways
- Heavy Haul Road - Surfaced Class 4
- Special Roads - Class 4
- Primary Grid Roads - Class 4
- Main Farms Access Road Surfaced Class 5
- Main Farm Access Roads - Class 5
- Grid Roads - Gravel Class 6
- Dirt Roads - Class 7
- Lanes
- Fireguard Road
- Railway
- Division Boundaries
- Trans Canada Trail
- Crown Land
- Indian Reserve Land
- TLE Indian Reserve Land
- SAGD Facilities
- Towns & Villages
- Hamlets
- Residence
- Hospital
- Hall
- Campsite
- Gravel Pit
- Bridge
- Cemetery
- Church
- School
- Oil Battery
- Golf courses
- Waste Disposal Site
- R.M. Boat Launch
- Provincial Pasture
- Provincial Forest
- Regional Park
- Waterbody
- Watercourse

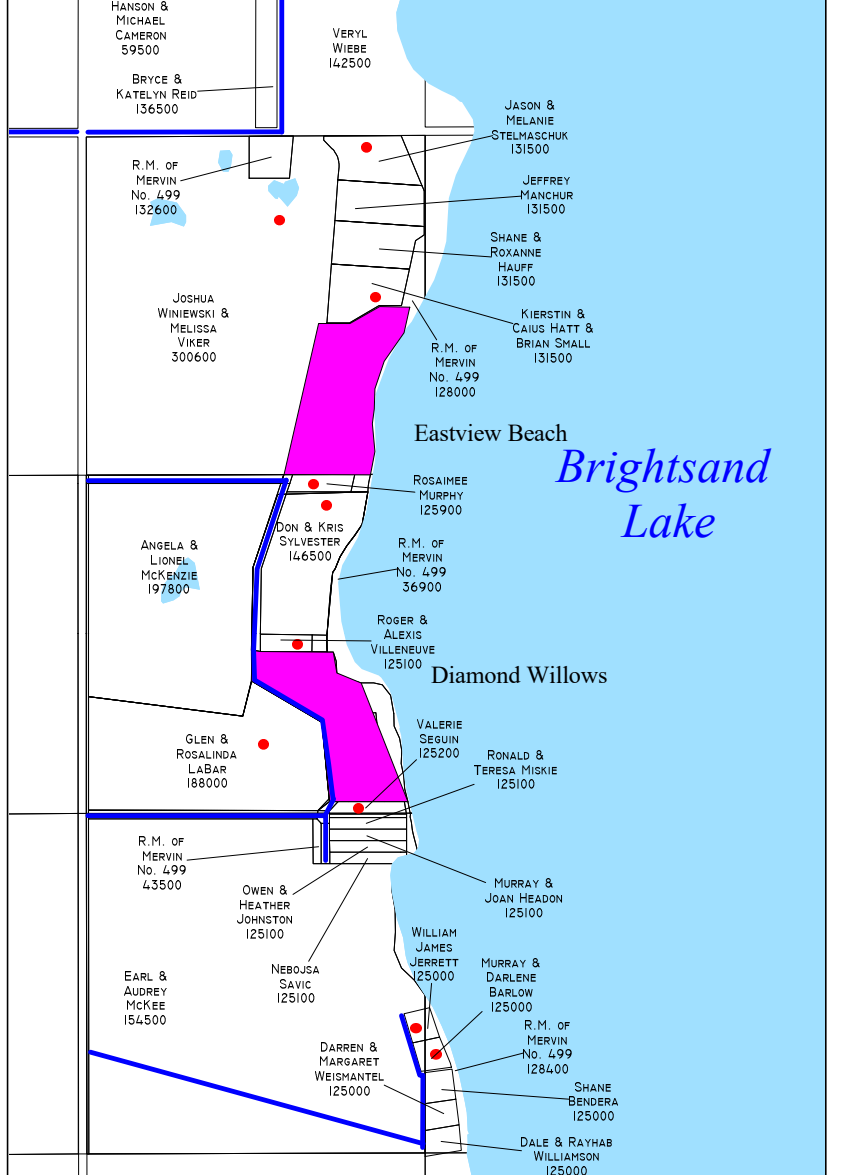
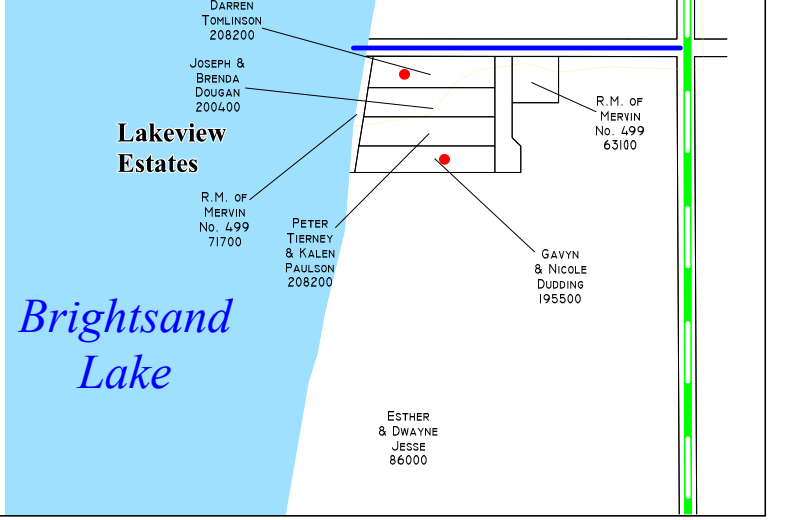
Insert "A"  
SW 25-53-19 & SE 26-53-19

Insert "B"  
NW 11-53-19 & SW 11-53-19

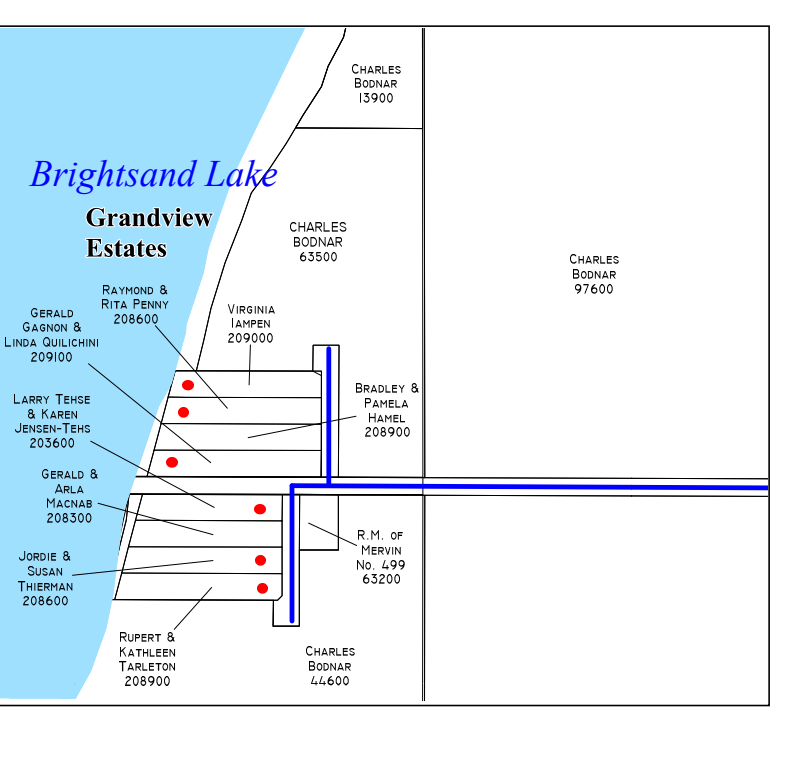


Insert "C"  
NE 23-53-20

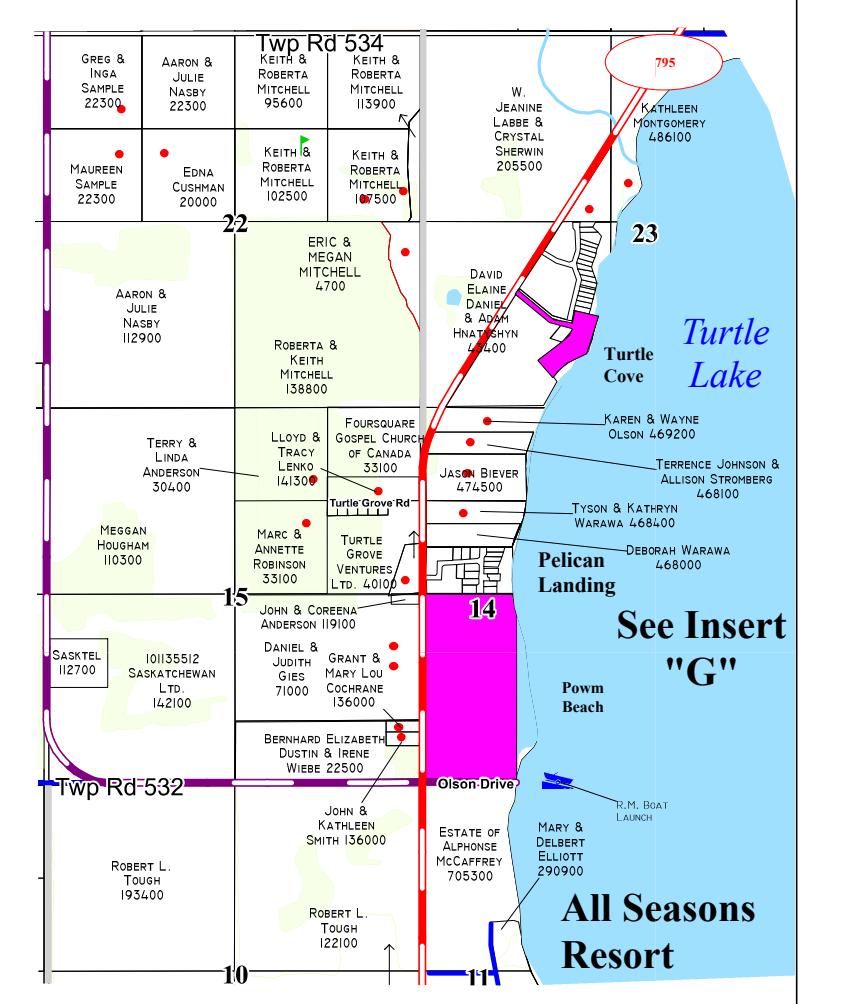
Insert "D"  
NW 17-53-20 & NW&SW 20-53-20



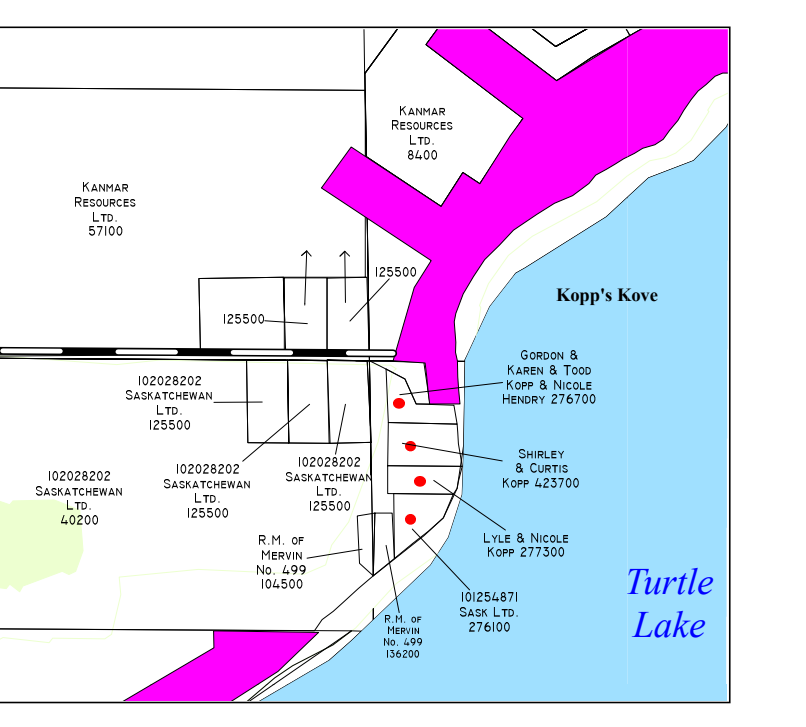
Insert "E"  
SW 14-53-20



Insert "G"  
Section 15-53-19 & NW & SW 14-53-19



Insert "F"  
SE 35-52-19 & NE 26-52-19



Legal Subdivision System

13	14	15	16
12	11	10	9
5	6	7	8
4	3	2	1

Township Subdivision System

31	32	33	34	35	36
30	29	28	27	26	25
19	20	21	22	23	24
18	17	16	15	14	13
7	8	9	10	11	12
6	5	4	3	2	1

Note:  
This map has been produced by MuniSoft for the R.M. of Mervin No. 499 using information supplied by others.  
Geographical data and topographic data (Copyright etc.) remain the property of the Municipality.  
Information Services Corporation of Saskatchewan for the production of this map under license to the municipality.  
Duplication in whole or in part is prohibited. It is the responsibility of the user to verify the accuracy of the information  
since changes in assessment, ownership and other information may have changed since the time of printing. E&OE.  
Updated December 2025

